



## WEEK 13

Welcome to Week 13 of our COVID-19 newsletter! Many segments of our economy reopened this week and many partial reopenings expanded. As we look forward to celebrating the 4th of July this weekend, we encourage you to continue wearing masks and practicing Kentucky's Healthy at Work guidelines.

## STATUS UPDATE

As of July 1, we are operating at a **LEVEL 3** response. For you that means:

- Warren RECC lobbies are CLOSED
- Drive-thru windows are OPEN
- Visitors are asked to reschedule unless it is an emergency

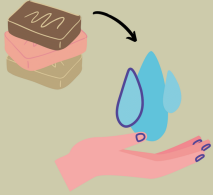
Visit [www.wrecc.com](http://www.wrecc.com) to make payments or to apply for service.



**Warren** RECC

A Touchstone Energy®  
Cooperative 

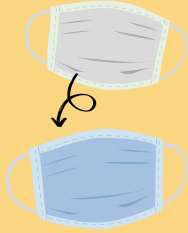
## A GUIDE TO MASK USE



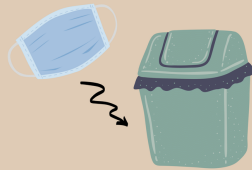
Before putting on a mask, clean hands with alcohol-based hand rub or soap and water.



Cover mouth and nose with mask and make sure there are no gaps between your face and the mask.



Replace the mask with a new one as soon as it is damp and do not re-use single-use masks.



To remove the mask: remove it from behind (do not touch the front of mask); discard immediately in a closed bin; clean hands with alcohol-based hand rub or soap and water.

Source: World Health Organization

# MASKS

With many holiday celebrations planned for this weekend and gatherings of 50 people now allowed, it is a good time to revisit best practices for wearing, cleaning, and disposing of masks. Visit the [CDC's Face Coverings page](#) to brush up!

# UNEMPLOYMENT

The Kentucky Career Center has launched a [web portal](#) where those needing assistance with unemployment can make appointments for in-person assistance. Career Center locations in Somerset and Hopkinsville will be open for appointments on July 7 and July 8.



# Warren RECC

A Touchstone Energy®  
Cooperative 

# TRAVEL



Planning a trip for the long 4th of July weekend? It may look a little different than you're used to. Click [here](#) for some expert tips on traveling safely during the COVID-19 pandemic. Wondering if your destination is safe? Click [here](#) for more information on current "hotspots" throughout the country.

# FUNDRAISER FUN!

Join Megans Mobile Grocery for 30 Walks in 30 Days starting today! In the month of July, share pictures on Facebook, Twitter, Instagram or LinkedIn of you walking, running, jogging, or exercising with the hashtag #30walks30daysMMG. Ask any local business, friends or family to donate for every day or mile you walk! Click [here](#) or call 270-843-6071 for more information!



# Warren RECC

A Touchstone Energy®  
Cooperative 